

Battery Removal/Replacement Instructions

Vacation/Seasonal Homes: If your home is a seasonal/vacation we recommend the following:

If you turn the power off or turn breakers off when vacant you must unplug the power supply and remove the battery upon leaving to prevent draining battery and damage to equipment.

CAUTION! To avoid electric shock, turn off the unit and unplug it from the AC power source before servicing the battery or installing a computer component.

We have several models of power supplies, see some examples below of how to remove/replace batteries: Battery cover location could be on the front, bottom or back of unit, varies with different models.



Open the battery compartment cover on the battery backup device. Depress the small textured area on the bottom of the lid while pulling it away from the housing.

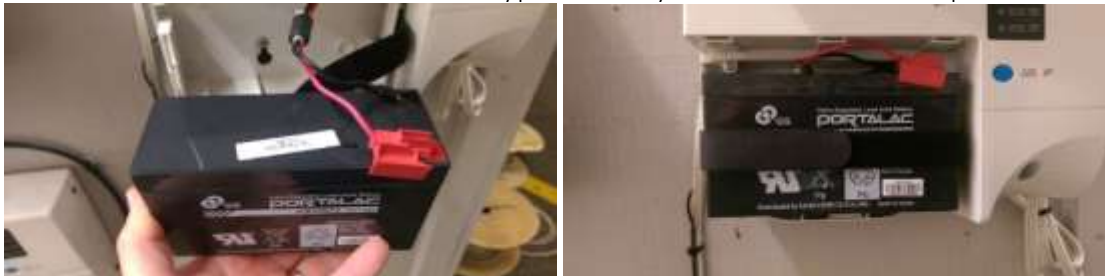
Next, release the hook-n-loop strap. Be careful to make sure the battery doesn't fall out! The battery is heavy and can cause damage or injury if it falls out.



Grasping the battery with one hand, carefully remove the red and black wires from the battery terminals by pulling firmly on them with your other hand.



Holding the new battery, reconnect the red and black wires. The battery terminals are color coded, so just match the red wire to the red terminal and the black wire to the black terminal. Carefully place the battery back inside the enclosure and replace the hook-n-loop strap.



Finally, replace the battery compartment cover. Plug the power supply back in to electrical outlet. The Missing Battery and Replace Battery lights should now go out within 15 minutes.

Battery Removal/Replacement -Continued



Color of power supply varies (beige or black).

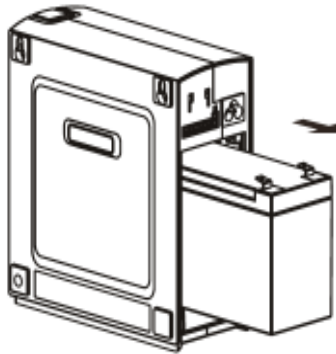
Vacation/Seasonal Homes: If your home is a seasonal/vacation we recommend the following:

If you turn the power off or turn breakers off when vacant you must unplug the power supply and remove the battery upon leaving to prevent draining battery and damage to equipment.

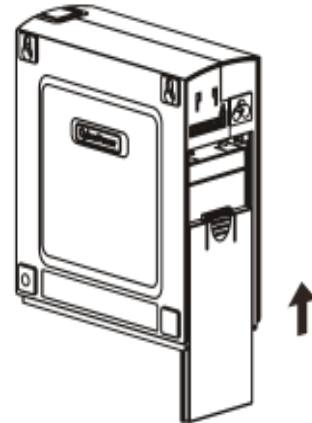
CAUTION! To avoid electric shock, turn off the unit and unplug it from the AC power source before servicing the battery or installing a computer component.



- Step 1:
a. Slide off the battery cover at the back of the



- Step 2:
a. Remove the battery from the enclosure.
b. Disconnect both battery cable connectors.



- Step 3:
a. Install the new battery by connecting the red lead to the positive terminal and the black lead to the negative terminal.
b. Slide the battery back into the compartment.
c. Replace battery cover to resume normal operation.

NOTE: Please do not discard the batteries. Please return to SKSRT or leave old battery next to power supply so a technician can return the battery for recycling.

Spruce Knob Seneca Rocks Telephone Company FCC 911 Battery Backup Disclosure

Backup Power for Home Phone Services during Power Outages

For many years, your home phone would allow you to stay connected to emergency voice services during a power outage. However, many of today's advanced home phone services require backup battery power to continue functioning during an outage. To avoid a disruption of telephone services including 911 emergency services, home security services, medical monitoring devices and other similar services requiring a telephone connection during an outage. SKSRT provides a standard battery backup to provide you with up to eight hours of telephone service in the event of a power outage. (see below for more information)

Cordless telephones require power and will not function during a power outage even if you have a battery backup for your SKSRT telephone equipment. SKSRT recommends that in addition to having a battery backup that you also maintain one corded phone connected directly to your in-home wiring for use in the event of a power failure. Additionally, you should always have an alternative means of dialing 911, such as a mobile telephone. If you have a monitored home alarm or medical device that uses SKSRT Fiber telephone as the communications pathway, your monitored alarm will not function during a power outage without battery backup power. It is recommended that you subscribe to an alternative communications pathway such as cellular backup for your monitored alarm or medical device. SKSRT shall have no liability for the failure of your services, including 911 services to function during a power outage, including failure due to the absence or insufficiency of battery backup power.

What Your Battery Can – and Can't – Do for You

Backup batteries for telephone service allow you to continue to use your home voice services for a limited time during a power outage. Without a backup battery or alternate backup source such as a generator, customers will not be able to make any calls, including emergency calls to 911 SKSRT's phone service. The only way to maintain the ability to use your phone is by using some form of backup power. Also, backup batteries will not directly prevent related equipment damage that may occur during extreme weather conditions or storms including lightning.

Performance and Monitoring of Your Battery

The batteries provided by SKSRT are rated to last for at least eight hours in idle mode when the battery is new. The battery is intended to enable users to make short, emergency or other urgent telephone calls. During an extended power outage, use your telephone service sparingly to preserve your battery life. The actual length of time that your telephone service will be available during a power outage depends on many variables, including, but not limited to: the amount of phone usage when the service is utilizing power from the battery backup; whether the battery backup is properly installed and charged, such as whether it has had an opportunity to fully recharge after a prior outage; the condition and age of the battery backup; and the amount of prior usage of the battery. Batteries lose capacity with age. However, actual results will vary depending on usage patterns, load, frequency of power outages, and environmental conditions, including temperature extremes and fluctuations. Failure to adhere to proper storage and usage conditions will reduce the talk time available to you in an outage and the lifespan of your battery.

Instructions for Proper Care and Use of Your Battery

If you do not store your battery correctly, it may shorten its useful life. Environmental factors such as temperature can shorten your battery's useful life. We recommend that you store your battery above 32°F and below 104°F. These batteries are rechargeable, but they will not last forever. **If your home is a Vacation/Seasonal Home and you turn the power off when vacant you must remove the battery and unplug the power supply upon leaving to prevent draining battery and damage.** Check your battery backup regularly, and know when to replace the battery. Some batteries will provide either an audible alarm or display a warning light when they need to be replaced.

NOTE: If you are you are contacted by SKSRT about your battery it is imperative you contact us as soon as possible so we can arrange for a replacement battery.

Available Backup Power Options:

For backup power lasting 24 hours, customers can purchase an optional battery from SKSRT. Please contact SKSRT for more information, pricing or to order a battery please call 888-676-2121 or 304-567-2121. There may be an additional fee for the installation of the battery.